

CANDLEWICK LEISURE

Bald Eagles at Candlewick Lake

Submitted by D.L. Hruby, Candlewick Drive



The pinkish photos were taken just as dawn turned the sky rose-colored. As the sun rose, it turned the icy lake into a bright blue background for these wonderful birds. The larger of the birds is the female, whom we call Henley. The smaller male, we call Frey. Seeing them together, especially so near, is rare!

WINTER FESTIVAL

BEAT THE WINTER BLUES AND COME TO THE REC CENTER AND HAVE SOME FUN!

JANUARY 15 FROM 2:30-4PM

SIP HOT CHOCOLATE

MAKE SMORES

WINTER CRAFTS

FACE PAINTING

PLAY GAMES

EVEN GO OUTSIDE AND BUILD A SNOWMAN!
(BRING YOUR WINTER GEAR IF YOU ARE GOING TO BUILD A SNOWMAN)



Amenities

2021/2022 Amenity Information

Watercraft Registration & Renewals Email documents to cwl@candlewicklake.org
Boats & Personal Watercraft (Jet-skis/Waverunners)

Mail, email, or drop off your current registration, proof of \$100,000.00 liability insurance, and the completed watercraft registration form and a new decal will be issued. Maximum boat length is 20' and there is a 90 HP limit on all motors operating on the lake.

There is no charge for the decal. All watercraft not registered to your Candlewick Lake address in 2020 must be inspected by Public Safety before it goes on the lake. All motorized watercrafts are required to be registered, have a new decal displayed every year, and have the member's unit and lot number preceded by CWL displayed on both sides of the watercraft.

Guest watercraft are not allowed.

Canoes, Kayaks and other Non-Motorized Watercraft

Non-motorized watercraft that are not required to be registered with the State, must display the member's unit and lot number preceded by CWL on both sides of the watercraft. You do not need to register non-motorized watercraft at the office.

Candlewick decals are not required for non-motorized watercraft.

Storage Site Renewal Email documents to cwl@candlewicklake.org

Mail, email, or drop off your completed registration form, payment, along with registrations for each item stored in the storage area and a new decal will issued. A current year's decal must be displayed on all items.

Storage Site locks will be changed on May 3rd. Please renew your storage site and exchange your key.

Large sites – Yearly Rental \$170.00

Small sites – Yearly Rental \$130.00

Dog Park Registration

The dog park is located by the Outpost. All dogs must be registered and have a dog park tag and a key to enter. The tags and keys are available at the Recreation Center. The lock will be changed on May 3rd.

Dog Tag \$10.00/Annually plus a \$25 Key Deposit

You must provide:

A copy of your homeowner's/renter's insurance

A copy of your dog's rabies vaccination including rabies tag number

Dog Park Registration Form

Extended Fitness Memberships

Residents may use the Fitness Center during regular hours of operation by presenting a valid Member ID card.

Extended Membership hours are 4:00 am – 10:00 pm daily. You must be 18. Sign up at the Recreation Center.

\$10.00/month per person

You must have a change of shoes to use the Fitness Center and Gym.

Savannah Oaks Golf Course

Opening Day April 16th (weather pending)

Please call ahead for a tee time. 815-339-0500 Ext. 410

Guest Fishing Passes Email pass request form to cwl@candlewicklake.org

Anyone age 16 and over is required to always have an Illinois Fishing License and a Candlewick Guest Fishing Permit in their immediate possession while fishing at Candlewick Lake. Active-duty military personnel and disabled veterans need to present a Military ID in lieu of an Illinois Fishing License and Candlewick Guest Fishing Pass.

Mail or email completed pass request form along with check made payable to CWL.

Annual Pass (Valid May 1st – April 30th) \$30.00 each - Limit 4 per household

Daily Pass \$10.00 each - Limit 5 per day

Three Day Pass (Consecutive Days) \$15.00 – Limit 5 per day

Guest Pool Passes Email pass request form to cwl@candlewicklake.org

Guests may not be allowed depending on Covid-19 restrictions. Residents must be with their guests while at the Candlewick Lake Pool. Children age 9 and younger must be accompanied by a chaperone that is at least 16 years old. Mail or email completed pass request form along with check made payable to CWL.

Annual Pass (Valid May 29th – September 6th) \$30.00 each - Limit 4 per household

Daily Pass \$5.00 each Your Member ID serves as your Resident Pool Pass.

A complete list of rules and regulations can be found at candlewicklake.org

2021/2022 Member ID Card

Information

It is not necessary to renew your Member ID card if your Member ID card has your date of birth printed on it. The following amenities will be included with your dues and will require a Member ID card. Your Member ID card must be presented at the time of service. If you do not have your Member ID card, additional fees may apply. All members of your family residing with you and wishing to use these amenities will be required to get a Member ID card.

(A Member ID card will not be issued to children under age 3.)

Resident Pool Pass

Resident Fishing Pass

Resident Green Fees

Resident Gym Pass

Fitness Center

Boat Decals

Snowmobile Decals

ATV Decals (for operation on the ice only)

Waiver Forms

A waiver form must be on file if you, your children, or your guests wish to use the pool, fitness center, gym, or participate in any classes or camps. All guests under the age of 18 must have the waiver form signed by their parent or legal guardian. Waiver forms that are already on file are still valid. Contact the Recreation Center for more information. Blank waiver forms are available online, at the Recreation Center, and at the Administration Office.

****Change in Building Hours Effective 11/1/21****

Recreation Center (November - April)

Monday – Friday	9:00 AM - 8:00 PM
Saturday	9:00 AM - 5:00 PM
Sunday	12:00 PM - 4:00 PM

Savannah Oaks Clubhouse (January 2022)

Friday	4:00 PM - 10:00 PM
Saturday	12:00 PM – 10:00 PM
Sunday	12:00 PM – 8:00 PM

Candlewick Lake Association, Inc. Telephone Numbers

Administration Office	815-339-0500
Public Safety Office	815-339-0500
Recreation Center	815-339-0500
Savannah Oaks Clubhouse	815-339-0500
Pool	815-339-0500
Administration Fax #	815-339-0501
Maintenance	815-339-0500
Report an Incident	815-339-0503
Visitor Call In	815-339-0311

By dialing 815-339-0500, you will be able to reach the Administration, the Public Safety Office, Recreation Center, or Savannah Oaks Clubhouse. Please make a note of these numbers.

Family Owned and Operated Since 2011

Comfort Solutions

Heating and Air Conditioning

cleaning • repairs • safety checks • 24/7 emergency service



WHATEVER IT TAKES.

HAPPY NEW YEAR!

- ComEd and Nicor Rebates
- New Furnace and Air Conditioning Combo - \$200 instant discount!
- Please look into joining our **PMA Program** and save up to 10% OFF on furnace and air conditioning installs and other services.

\$50 OFF
UV Lights, Plasma Air Purifiers and whole house Humidifiers
WITH THIS AD
GOOD THRU 1/31/22

\$20 OFF on your next SERVICE CALL with this coupon

Once again, Thank You for your Support!

24 MONTHS No Interest Financing with Wells Fargo

GOOD THRU 12/31/21

HOURS OF SERVICE:

Monday – Friday 7:30am-4:00pm
24/7 Emergency Service

We Accept:



Your Local Hometown Bryant Dealer Serving Poplar Grove and Boone County

10 YEAR LIMITED WARRANTY

815-218-6271

www.comfortsolution.biz
keithanders7@live.com

Savannah Oaks

Savannah Oaks Clubhouse Hours of Operation

January 2021		February 1st – 20th		February 21st – 28th, March - Closed	
Friday	4:00 PM - 10:00 PM	Friday	4:00 PM - 10:00 PM	April (estimated opening 8th) 2022	
Saturday	12:00 PM - 10:00 PM	Saturday	4:00 PM - 10:00 PM	Sunday - Thursday	8:00 AM - 8:00 PM
Sunday	12:00 PM – 8:00 PM	Sunday	12:00 PM – 10:00 PM	Friday - Saturday	8:00 AM - 10:00 PM

Come on out for Savannah Oaks



JANUARY 14th & 28th

Must be 21 to play

We will have free Bingo!

TIME - 7:30PM START

There will be prizes awarded.

Kitchen will be open and Drinks will be COLD!



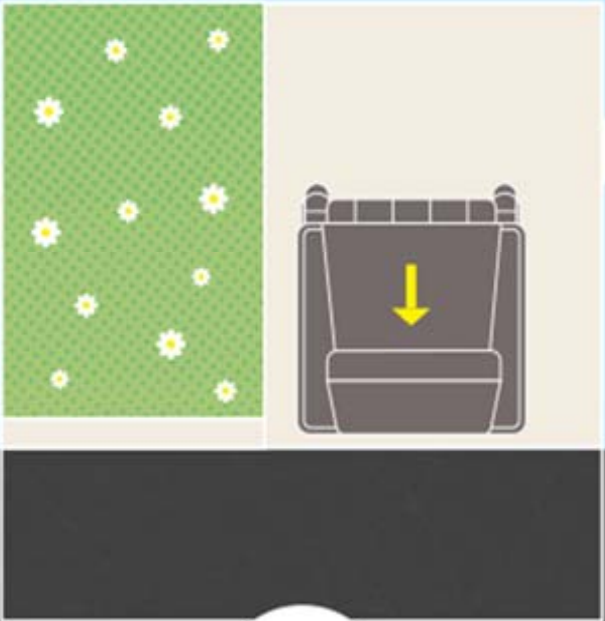
JANUARY 8th
8-10pm
Savannah Oaks CLUBHOUSE

We need your help to serve you better and to improve collection efficiency!



STEP 1
ROLL

Place all items inside the cart, close the lid completely and safely ROLL the cart to the edge of the curbside.



STEP 2
PLACE

PLACE the cart at the edge of the curbside with the wheels and handle facing the house and the lid opening toward the street.



STEP 3
SPACE

Make sure there is nothing in front of the cart and at least 3 feet of SPACE or clearance on all other sides.

Please remember, keep a minimum of 3 feet of space between carts and other objects. Thank you!

Rec Center

CANDLEWICK LAKE REC. CENTER HOURS

Starting November 1, 2021-April 30, 2022

Front Desk & Regular Fitness Center Hours

Monday – Friday 9:00 a.m. – 8:00 p.m.
 Saturday 9:00 a.m. – 5:00 p.m.
 Sunday 12:00 p.m. – 4:00 p.m.

Extended Fitness Center Hours

Monday through Sunday
 4:00 a.m.-10:00 p.m. Fee: \$10.00/Month/Per Person



- RESERVATIONS ARE NOT REQUIRED FOR FITNESS CENTER
- OPEN GYM
- FULL COURT BASKETBALL MONDAYS AND FRIDAYS 6:00-7:45 PM
- LOCKER ROOMS OPEN FOR EXTENDED MEMBERSHIP USERS
- MASKS REQUIRED FOR ANYONE ENTERING THE BUILDING

Join us for a cup of coffee at the Rec Center in Water's Edge

Tables will be social distanced!
 Masks required in the building.

Compliments of Berkshire Hathaway Home Service & Crosby Stark Real Estate



NEIGHBORHOOD WATCH SAYS:



ALL HOMES MUST HAVE HOUSE NUMBERS VISIBLE FROM THE ROADWAY

LET PUBLIC SAFETY FIND YOU IF THEY NEED TO!!!!

CANDLEWICK LAKE REC CENTER GYM SCHEDULE

January 1-31, 2022

SUN.	MON.	TUES.	WED.	THURS.	FRI.	SAT.
	Morning Walking 9:15-10:15	Morning Walking 9:15-10:15	Morning Walking 9:15-10:15	Morning Walking 9:15-10:15	Morning Walking 9:15-10:15	
		Kids Gym 10:30 -12:00				
Open Gym 12:00-4:00 PM	DVD Zumba 11:00-12:00		DVD Zumba 11:00-12:00			
	Open Gym 12:00-6:00	Open Gym 12:00 - 8:00	Open Gym 12:00-8:00	Open Gym 10:30 - 8:00	Open Gym 10:30 -6:00	Open Gym 9:00-5:00pm
GYM CLOSED 4:00 PM						GYM CLOSED 5:00 PM
	Full Court Bball 6:00 - 7:45 16 years & older				Full Court Bball 6:00 to 7:45 16 years & older	
	GYM CLOSED 8:00 PM	GYM CLOSED 8:00 PM	GYM CLOSED 8:00 PM	GYM CLOSED 8:00 PM	GYM CLOSED 8:00 PM	



GYM RULES-MUST HAVE YOUR CWL ID WITH YOU

YOU MUST CHANGE YOUR SHOES BEFORE ENTERING THE GYM.

No one under the age of 14 may be in the Gym without someone 14 or older to supervise them.

No street shoes or dark soled tennis shoes or stocking feet are allowed.

No pop, food, or gum is allowed.

Guest day passes will be available for non-residents for \$3 and will only be sold to anyone who is with a CWL resident who has a proper ID.

Liability waivers must be signed by anyone entering gym or fitness center.

Minor waivers may only be signed by parent/legal guardian.

No playing kickball

No full court basketball unless scheduled

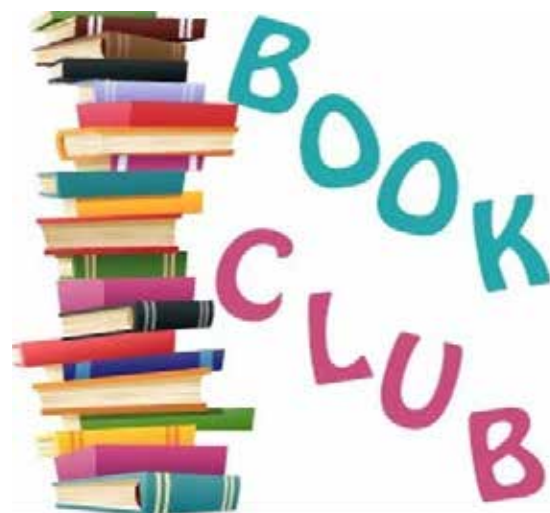
FAMILY GYM

"Family Gym" is designed for the enjoyment of candlewick families.

No unaccompanied children.

OPEN GYM

Must be 14 years of age or accompanied by a 14 year old or older.



Book Club informational meeting

Thursday, January 13th

6:30 p.m. in the Water's Edge Room

At the Rec Center

Rec Center



New DVD Class to start in January!
 Monday & Wednesday 6 p.m.
 Monday & Wednesday 11 a.m.



Fitness Center
 Orientation Classes

The Rec Center will be offering Fitness Orientation Classes for anyone wanting to know how to properly use the fitness equipment and for resident's ages 16-17 who want to use the Fitness Center without needing a parent present to workout.

BY APPOINTMENT ONLY

Sign up at the Rec Center front desk.

Class Cost: \$10.00

Your \$10.00 will be **forfeited** if you are a **no show** when you have scheduled a class.

CWL Rec Center Member IDs

You are required to show your Candlewick Lake ID to enter the fitness center, gymnasium, and pool for any reason other than programs. It will cost all individuals a daily fee of \$3.00 to enter the gym, \$3.00 for the fitness center and \$5.00 at the pool if you do not have an ID. All guests must be accompanied by a Candlewick Resident.

Dog Park Tags/Keys

Locks are changed on the gate May 3rd. You must be registered for 2021-2022 season to use the park.

Please bring:

- a copy of your homeowners/renter's insurance declaration page
- a copy of your dog's rabies vaccination including rabies tag #
- Dog Park Registration Form, available on website,
- \$10 for Dog Park Tag
- \$25 Key Deposit

**If you have previously registered your dog for the Candlewick Dog Park you do not need to fill out a new registration form.

Candlewick Crafters

Want to join a friendly group and learn a new skill or simply work on your recent project?



CWL Crafters meet January 10th & 24th
 1 p.m. - 4 p.m.
 Lakeview Room of the Rec Center.



Every Tuesday 10:30 - 12:00

CWL Rec Center

This is a fun non-instructional environment for both you and your child to gather and socialize.

Parents/caregivers must remain with children and supervise their play.

Equipment such as balls, mats, and toys will be available for your child to play with while you chat with other parents or join in on the fun.

This program is free for Candlewick residents.

Drop in basis no registration is required.

**Bring a change of shoes, a mask
 & your CWL ID!**

WE NEED YOU...
 TO JOIN NEIGHBORHOOD WATCH,
 CALL PUBLIC SAFETY
 AT 815-339-0500!

Community Events

VALENTINE BINGO

FRIDAY, FEBRUARY 11, 2022

6:30pm-8:00pm



BRING YOUR FAMILY AND ENJOY AN EVENING OF BINGO AND FUN.

VALENTINE THEMED PRIZES WILL BE AWARDED TO THE WINNERS.

BRING YOUR OWN SNACKS AND DRINKS.

CWL New Year Biggest Loser Challenge

10 Weeks
Jan. 5th-March 10th

Cash Prizes
For Winners

\$\$ Incentive
to stay on
track during
the Holidays \$\$

The time is now!
Transform your body!
Feel good and look great!

\$20.00 Sign Up Fee

- Competition is based on total percentage of body fat lost during the competition period.
- Weigh ins will be held in private at the Rec center.

SIGN UP AT THE REC CENTER

starting January 5th!



CWL Biggest Loser Rules



Rules

- Participation Cost: \$20.00 person.
- Two age groups: 15 – 40 years & 41 and older.
- Starting date: January 5th for 10 weeks.
- **Final weigh in date is March 10th, 2022. Everyone must weigh in by this date.**
- The winners will be announced March 11th at the Rec Center.
- You can join anytime during the first 3 weeks (the longer you wait, the harder it is to win).
- We will use the percent of body weight loss.
 - The calculation is: take your actual weight (today) and subtract it from your initial weight. Divide that number by your initial (starting) weight. Take that number and multiply it by 100 and you get your weight loss percentage.
 - **Example: Starting weight-200 lbs, and I lose 5 lbs in a month ending up at 195lbs.**
That's 200 -195 (5 lbs). Take 5lbs and divide it by your starting weight (200). Multiply that by 100 and you get 2.00%.
- The winner of each age division will receive 90% the money collected in that age category.

Weigh-In:

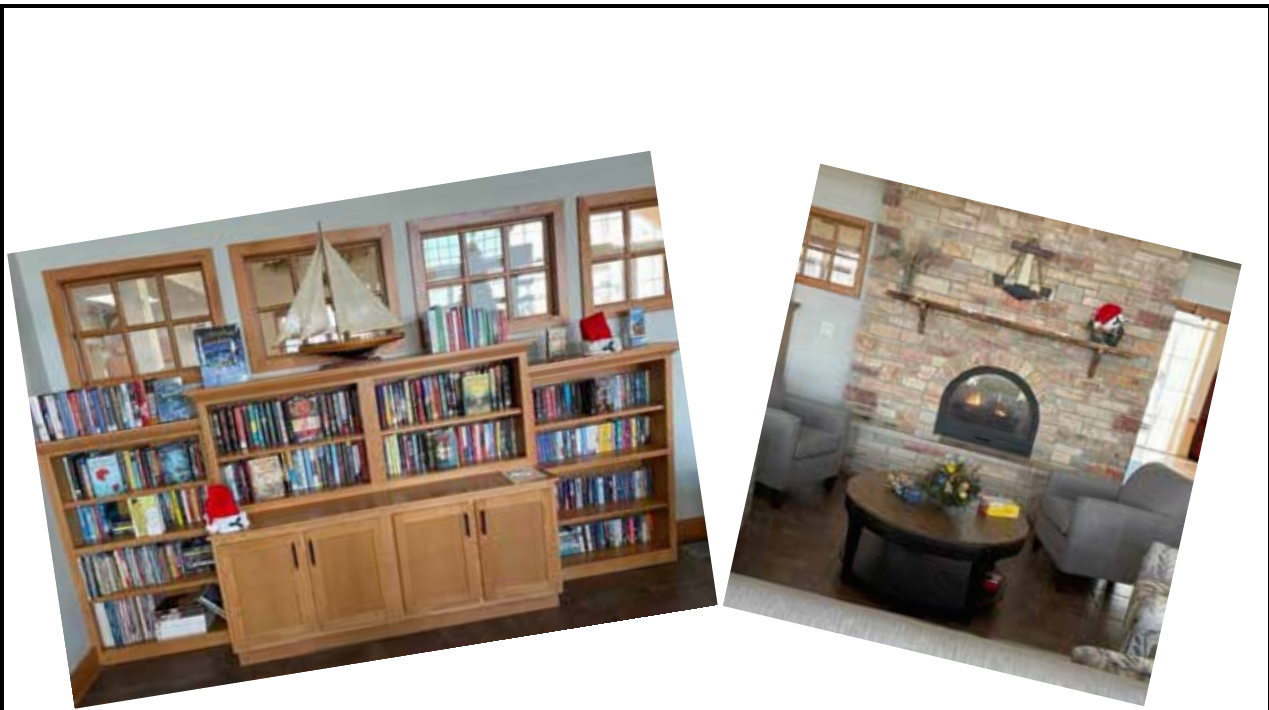
- Starting weigh in is Wednesday, January 5th, 2022 (you must weigh in by January 26th)
- Weigh in will be held and recorded at the Rec Center Front Desk on the Rec center scale.
- Hours for weighing in are: Mon-Fri 9:00-7:30pm, Sat 9:00-4:30pm, Sun. 12:00-3:30pm.
- You can weigh in weekly or bi-weekly. We encourage bi-weekly so you don't get discouraged.

Community Events

Weichert
REALTORS®
Tovar Properties
BUY-SELL-RENT



WeichertTovar.com
CALL US TODAY!
815-877-8500



Lending Library

Stop by the Rec Center for a book!

Cozy up by the fire and read for a while!

We have a great selection of books to choose from in the newly renovated Water's Edge.

Take a book, leave a book!

WE PAY HIGHEST PRICES for Gold, Silver, Jewelry, Coins, Sterling Flatware & Silver Plated Items!




10% MORE FOR JEWELRY WITH THIS AD

Monday-Friday: 9:30am-5pm
Saturday: 10am-4pm Call Anytime for an Appointment

BELVIDERE COLLECTIBLE COINS
815.547.7111 880 Belvidere Rd. in Logan Square
www.goldsilverjewelrycoin.com

SNYDERS
Simply Better Pharmacies

Don't want to go out in the cold but need your medicine?
Just give Poplar Grove Snyder's a call at 815-765-1300



- We are starting a prescription delivery service for a small fee of \$3.00
- We will deliver on Tuesday, Wednesday, and Thursday between the hours of 2:00 and 4:00 p.m.
- The delivery area is Belvidere, Caledonia, Capron and Poplar Grove.
- Someone must be home at the time to sign for the delivery.

13521 Illinois Route 76 • Poplar Grove, IL
815-765-1300

TOP NOTCH ROOFING & EXTERIORS, INC.

Prompt & Professional Service at the Most Reasonable Rates!
Insurance Claims Specialists

Immediate Expert Repairs
Tear-Offs • Re-Roofs
Flat Roofs • Cedar Shakes
Metal Roofs • Siding
Aluminum Soffit & Fascia
Gutters & Downspouts

Setting a Higher Standard!
Residential • Commercial

Licensed • Bonded • Insured
IL. Lic# 104.017358
All Work 100% Guaranteed!



FREE Estimates **815-721-4666**
www.TopNotchRoofing.net



Workmanship Guaranteed. Our Products Carry Some of the Best Warranties in the Industry.

Information

From the Table - Just a Bite

By S.L. Bartels, Drew Ct.

It's January! There are a lot of firsts attached to this month aside from being the first month of the year:

- The first Super Bowl was on January 15, 1967
- The first Winter Olympics took place on January 25, 1924.
- The state of Kansas joined the Union on January 29, 1861
- January 1, 1892 Ellis Island in N.Y. Harbor opened.
- Alaska was admitted as the 49th U.S. State, January 3, 1959.

And on a personal note, it's the month I get my flu shot and begin making my Flu Fighter Cookies. These cookies are chock full of flavor, texture and immunity boosting ingredients:

Fresh Ginger - Contains some antiviral compounds and antihistamine properties that help combat congestion.

Yogurt - Helps boost your digestive system's ability to absorb vitamins and minerals; a by-product of balancing the bacteria in your digestive tract.

Oats - Contain selenium which helps your body fend off cell damaging molecules called free radicals.

Cranberries - Provide antioxidants which also fight off free radicals.

Walnuts - Contain zinc, a mineral that helps keep viruses from reproducing in your body.

Flu Fighter Cookies

Makes about 30 cookies

Ingredients:

- 2 ¼ cups all purpose flour
- 1 ¼ teaspoon baking powder
- ¾ teaspoon baking soda
- ¾ teaspoon ground cinnamon
- ¼ teaspoon ground nutmeg
- pinch of ground cloves
- ¼ teaspoon salt
- 1 stick butter at room temperature
- 1 cup packed dark brown sugar
- 2 large eggs
- ¼ cup molasses
- ¼ cup low-fat plain Greek yogurt
- 1 teaspoon freshly grated ginger
- 2 teaspoons finely grated lemon zest (about 1 lemon)
- ½ cup old fashioned oats
- 1 ¼ cup golden raisins (Regular raisins work well too)
- 1 ¼ cup dried cranberries
- 1 ¼ cups roughly chopped walnuts, toasted.



Instructions:

1. Line 2 large baking sheets with parchment paper. Whisk the flour, baking powder, baking soda, cinnamon, nutmeg, cloves and salt in a medium bowl.
2. Beat the butter and brown sugar in a large bowl with a mixer on medium speed until light and fluffy, 3 minutes. Beat in the eggs, one at a time, fully incorporating each before adding the next. Add the molasses, yogurt, ginger and lemon zest and beat until smooth, scraping the sides of the bowl as needed. Reduce the mixer speed to low and beat in the flour mixture to make a sticky batter (do not over mix). Fold in the oats and half of each the raisins, cranberries and walnuts. Mix the remaining dried fruit and nuts in a small bowl and set aside.
3. Drop heaping tablespoonfuls of batter onto the prepared baking sheets. Top each with some of the reserved dried fruit and nut mixture and chill for 30 minutes. Meanwhile, preheat oven to 375 degrees f.
4. Bake the cookies until dark golden but still soft, 10-12 minutes; cool on a rack. Store in an airtight container for up to 1 week. Enjoy!

2022- Bringing in the New Year- What's your Cocktail I.Q.?

By S.L. Bartels, Drew Ct.



1. Match the Type of liqueur with its flavoring.

- | | | | | | |
|------------------|------------------|-----------|-----------|--------------|-------------|
| Framboise _____ | Midori _____ | | | | |
| Kahlua _____ | Triple Sec _____ | | | | |
| Frangelico _____ | Amaretto _____ | | | | |
| A. Coffee | B. Melon | C. Almond | D. Orange | E. Raspberry | F. Hazelnut |

2. How much liquid does a shot glass usually hold? _____

- A. ¾ oz. B. 1 oz. C. 1 ½ oz. D. 2 oz.

3. Match the type of Martini to its defining characteristics.

- | | | | |
|---------------------------------|------------------------------------|---------------------------------------|---|
| Dirty _____ | Dry _____ | Vesper _____ | Gibson _____ |
| A. It's made with less Vermouth | B. It has extra olive juice in it. | C. It's garnished with a pearl onion. | D. It's made with Gin, Vodka, and a splash of wine based liqueur. |

4. Which type of tequila is typically used for Margaritas? _____

- A. Anejo B. Blanco C. Extra Anejo D. Reposado

5. Which musician has his own brand of tequila? _____

- A. Justin Timberlake B. Sean Combs C. Adam Levine D. A. B. and C.

Answers on Page 12

RECYCLE RIGHT

YES!

Clean & Empty

Replace lids & caps

METAL

Steel & Aluminum Containers and Foil

PAPER

Cardboard (flattened), Office Paper, Newspaper, Magazines

FOOD & BEVERAGE CARTONS

GLASS

Containers: Bottles & Jars Only

PLASTIC

Containers: Bottles, Tubs, Jugs, and Jars Only

NO!

Put material in loose - Not in Bags

No Plastic Bags
No Product Wrap
(return clean to retailer)

No Big Items (Electronics, Wood, Propane Tanks, Scrap Metal or Styrofoam - check with local authority for other options)

No Tangles (Hangers, Hoses, Wire, Cords, Ropes or Chains)

No Clothing Textiles or Shoes (donate)

No Food, Liquid, Diapers, Batteries or Needles

No Shredded Paper (check with local authority for other recycling options)

Clean Recycling is Recycling Right! These Guidelines represent the common items accepted in most recycling programs in Illinois.

Remember---When in doubt, toss it in the garbage!

For more information, check with your local municipality or visit www.advanceddisposal.com/recyclerright

Acceptable & unacceptable recyclable items subject to change.

Information

**Parks are open
from Dawn to Dusk.
Dawn is 30 minutes
before sunrise,
Dusk is 30 minutes
after sunset.**

January	Sunrise	Sunset
1	7:24 AM	4:33 PM
2	7:24 AM	4:34 PM
3	7:24 AM	4:35 PM
4	7:24 AM	4:36 PM
5	7:24 AM	4:37 PM
6	7:24 AM	4:38 PM
7	7:24 AM	4:39 PM
8	7:24 AM	4:40 PM
9	7:23 AM	4:41 PM
10	7:23 AM	4:42 PM
11	7:23 AM	4:43 PM
12	7:23 AM	4:44 PM
13	7:22 AM	4:45 PM
14	7:22 AM	4:46 PM
15	7:21 AM	4:48 PM
16	7:21 AM	4:49 PM
17	7:20 AM	4:50 PM
18	7:20 AM	4:51 PM
19	7:19 AM	4:52 PM
20	7:18 AM	4:54 PM
21	7:18 AM	4:55 PM
22	7:17 AM	4:56 PM
23	7:16 AM	4:57 PM
24	7:16 AM	4:59 AM
25	7:15 AM	5:00 PM
26	7:14 AM	5:01 PM
27	7:13 AM	5:02 PM
28	7:12 AM	5:04 PM
29	7:11 AM	5:05 PM
30	7:10 AM	5:06 PM
31	7:09 AM	5:08 PM

No wake begins at sunset time listed.

A/C's Best Cooling & Heating Co.
 (New Local #) **779-770-2224**
Candlewick Resident

Service & Installation On All Units

★ **30 Year** ★
★ **Anniversary!** ★

\$500⁰⁰
Clean & Check
Furnace or AC

Call For A FREE Estimate
We'll Beat Anyone's Price By 10%

CWL Dog Park Rules & Regulations

1. Purpose: The Candlewick Lake Dog Park (the “Dog Park”), as identified by the Board, has been developed to give Members a place where the dogs of Residents can run free. For everyone’s safety and enjoyment, you and your dog(s) are required to adhere to the following rules and regulations while visiting the Dog Park.

2. Rules and Regulations:

- 2.1 Use of the Dog Park is prohibited unless the Resident using the Dog Park has purchased the required tag (the “Tag”).
- 2.2 To obtain a dog park tag, all dogs must have proof of a current up-to-date rabies tag. It is recommended that dogs be current on all their shots; especially kennel cough, distemper, parvo virus and a yearly fecal exam.
- 2.3 Residents will pay \$10/dog/year for a Tag. Fees are based on a **fiscal** year (May 1-April 30), and not when the Tag is purchased. **There will be a \$5 replacement fee for lost tags.**
- 2.4 Residents purchasing tags must read the Dog Park Rules and Regulations (collectively the “Dog Park Rules”) and agree in writing that they understand and assume all responsibility for the risk associated with using this facility.
- 2.5 Tags may be revoked and/or fines charged for non-adherence to the Dog Park Rules, and/or if the Resident is not in good standing with the Association.
- 2.6 The Dog Park is divided into two areas: one area is for dogs weighing 25 lbs and under; and the other area is for all dogs.
- 2.7 Dog park hours are from 6:00 a.m. until 8:00 p.m. or dusk, whichever is later. Public Safety will lock and unlock the Dog Park daily. The Association reserves the right to change, at any time, the times and days the Dog Park is open.

3. Usage Rules:

- 3.1 Use of the Dog Park is restricted only to members and their dogs that have been issued proper, valid, and current Tags. Use of the Dog Park by those that do not have a current Tag is prohibited, although more than one person may be present for each dog.
- 3.2 Uses of the Dog Park for anything other than personal/residential use of the Dog Park with a dog with a valid Tag is prohibited, including but not limited to dog training classes, solicitation of dogs, and other similar uses.
- 3.3 Dogs must be under control and in the sight of the user at all times. The user shall be and remain responsible for the behavior of the user’s dog(s).
- 3.4 If a user’s dog is aggressive, the user must leash the dog. Said leash shall not exceed seven feet in length. The user agrees that the user will address any aggressive behavior before it escalates. If the dog is still aggressive after reasonable steps have been timely taken, the user agrees to remove the user’s dog(s) promptly. **If aggressive dog owner refuses to remove aggressive dog it is the right of other dog owners to call Public Safety. Public Safety will use their discretion to rectify the situation.**
- 3.5 Candlewick Lake reserves the right, at any time, with or without written notice, to refuse to issue, and/or revoke the Tags of dogs displaying aggression or intimidating behavior towards other dogs or people. No refunds will be given for revoked Tags. Candlewick Lake **Rec Manager is** hereby empowered to make these decisions in their discretion.
- 3.6 Registration and rabies tags must be worn on all dog collars and visible at all times when using the Dog Park.
- 3.7 In the event of a dog bite or other injury, each user who is involved, either on their own or through their dog(s), shall exchange Tag and other reasonably-required information such as a name, telephone number, and address.
- 3.8 By their use of the Dog Park, users stipulate and agree that they know and understand that not all dogs like other dogs. Users agree to research methods to help understand dog behavior and socialization as needed. Users also acknowledge by their use of the Dog Park that some dogs growl

- when they play with other dogs, and thus just because one dog is growling does not mean that it is necessarily being aggressive.
 - 3.9 Absolutely no food is allowed to be brought into the Dog Park, including but not limited to dog treats. All dogs have great sniffers and can become aggressive **even** when food is in a pocket.
 - 3.10 The maximum number of dogs that any one user may bring to the Dog Park at the same time is four.
 - 3.11 Users must carry a leash and a cleanup bag at all times when using the Dog Park. Users are required to immediately pick up after their dog(s). All dog waste must be disposed of properly in onsite refuse containers if available. If such containers are not onsite and able to be used, the user shall dispose of the waste in a proper manner offsite, for it shall not be an excuse that the Association containers are not onsite and able to be used. Users are encouraged to clean up the waste of others if they see one to help keep the area clean.
 - 3.12 All objects used for dogs such as tennis balls, frisbees, and other dog toys must be removed when leaving the Dog Park. The Association reserves the right to discard any such objects left at the Dog Park.
 - 3.13 Users must be 16 years of age or older. Users between the ages of 11 and 15 must be accompanied by an adult. Children age 10 and under are not allowed at the Dog Park. Users hereby acknowledge, by their use of the Dog Park, that the restriction of Children age 10 and under is for their own protection.
 - 3.14 Male dogs must be neutered. Female dogs in heat are not allowed inside the Dog Park. No dogs under 6 months of age are allowed.
 - 3.15 Smoking and/or consumption of alcohol beverages are both strictly prohibited.
 - 3.16 Non-member dogs are not allowed in the Dog Park. Users allowing non-member dogs into the dog park may have their Tags revoked.
 - 3.17 Users are discouraged from allowing their dogs from standing at or near the gate as people are trying to enter. Users agree to not enter if another dog is at the gate unattended.
4. Additional Provisions:
- 4.1 All users of the Dog Park, by virtue of their use thereof, acknowledge their notice that the Dog Park is not supervised, and that use is at the user’s own risk. To the fullest extent allowed by law, users of the Dog Park, by virtue of their use thereof, stipulate and agree that Candlewick Lake Association is not responsible for injury or damage to any user, dog, animal, or other property, and waive any and all claims they may have against Candlewick Lake Association (including employees, officers, directors, and agents thereof) related to the use of the Dog Park.
 - 4.2 Nothing contained herein shall be construed to limit, alter, or otherwise restrict the applicability of other rules, regulations, and restrictions on pets in Candlewick Lake.
 - 4.3 The Association reserves the right to, at any time, amend these Rules and Regulations, close (temporarily and/or permanently) the Dog Park, and impose additional rules and regulations. In such event or events, there shall be no redress or compensation to anyone as a result of such event or events, including but not limited to those persons that have purchased tags.
 - 4.4 In the event one or more provisions contained herein is now or in the future violates any applicable rule, regulation, statute, law, or other applicable provision of the law, said provision(s) shall be automatically amended to the least extent possible to bring said provision(s) into compliance with the law. In the event a person that has been issued a Tag is aware (or believes) that of a provision contained herein violates the law, it is the responsibility of said person to timely notify the Association of such knowledge or belief as a pre-condition to any request for redress due to such actual or alleged violation.

Classifieds

SERVICES

MUST LOVE DOGS

Candlewick resident offering dog walking, pet sitting, in your home or mine.
Incorporated and insured.
Call Danielle 815-319-1153
09/22

HIRING

HIRING

Hiring house cleaners full-time and part-time positions.
Incorporated and insured.
Call Danielle 815-319-1153
09/22

Candlewick Lake Classifieds

13400 Hwy. 76, Poplar Grove, IL 61065

815-339-0500

Fax: 815-339-0501

CLASSIFIED LINE AD

Name _____

Address _____

City _____ State _____ Zip _____

Phone _____

STANDARD 3-LINE AD

.25

.50

.75

1.00

1.50

1.75

2.00

2.25

2.75

3.00

3.25

3.50

4.00

4.25

4.50

4.75

\$5 standard 3 line ad (up to 15 words)

25¢ per additional word _____

15¢ each **bold** word

Border \$1.00 Local Graphic \$1.00

Large print (14pt.) \$1.00 line (max 11 spaces)

_____ Classification

_____ Start Date

_____ # of Paid Insertions

_____ Total Cost of Ad

**Prepayment
Required**

Cash/Check/
Credit Card

**Deadline: 15th
of every month**

**Reach over 7,800
with Candlewick
Classifieds!**

Ad

Disclaimer

We reserve the right to refuse any advertisement, photo or article.

January Calendar

Sunday	Monday	Tuesday	Wednesday	Thursday	Friday	Saturday
						1 OFFICE & REC CENTER CLOSED ALL DAY 8:00 AM AA Meeting Outpost
2	3 6:30 PM Events Commission Rec Center	4	5 7:00 PM AA Meeting Outpost	6	7	8 8:00 AM AA Meeting Outpost 9:00 AM Citation Review Rec Center 8:00 PM Pub Trivia Savannah Oaks
9	10 6:15 PM Board Workshop - Budget Rec Center	11 6:30 PM Lake Management Rec Center	12 6:30 PM Public Safety Rec Center 7:00 PM AA Meeting Outpost	13 6:30 PM CWL 50th Anniversary Meeting Rec Center	14 7:30 PM Bingo Savannah Oaks	15 Electronic Submittal of Board Statement of Candidacy Due by 4:30 PM 8:00 AM AA Meeting Outpost 2:30-4:00 PM Winter Festival Rec Center
16	17 Written Submittal of Board Statement of Candidacy Due by 8:30 AM 5:30 PM Finance Admin Office	18 6:30 PM Board Meeting Rec Center	19 6:30 PM ECC Meeting Admin Office 7:00 PM AA Meeting Outpost	20	21	22 8:00 AM AA Meeting Outpost
23	24	25	26 11:00 AM Communications Admin Office 7:00 PM AA Meeting Outpost	27 6:30 PM Recreation Commission Rec Center	28 7:30 PM Bingo Savannah Oaks	29
30	31					

February Calendar

Sunday	Monday	Tuesday	Wednesday	Thursday	Friday	Saturday
		1	2	3	4	5 8:00 AM AA Meeting Outpost
6	7 6:30 PM Events Commission Rec Center	8 6:30 PM Lake Management Rec Center	9 6:30 PM Public Safety Rec Center 7:00 PM AA Meeting Outpost	10	11 6:30-8:00 PM Valentine Bingo Rec Center	12 8:00 AM AA Meeting Outpost 9:00 AM Citation Review Rec Center 1:00 PM Candidates Forum/Budget Hearing Rec Center 8:00 PM Pub Trivia Savannah Oaks
13	14 5:30 PM Finance Admin Office	15 6:30 PM Board Meeting Rec Center	16 Ballots Mailed Out 6:30 PM ECC Meeting Admin Office 7:00 PM AA Meeting Outpost	17	18	19 8:00 AM AA Meeting Outpost
20	21	22	23 11:00 AM Communications Admin Office 7:00 PM AA Meeting Outpost	24 6:30 PM Recreation Commission Rec Center	25	26 8:00 AM AA Meeting Outpost
27	28					

New Year, New Home!!?

2022 MAY BE THE YEAR FOR YOU TO SELL!
PRICES HAVE INCREASED OVER 19%* LAST
YEAR IN CANDLEWICK! THAT MEANS MORE \$\$
IN YOUR POCKET! CALL US TODAY FOR MORE
INFO!!



JOSH BOHLING
CANDLEWICK RESIDENT & REALTOR
708-942-5848



CATHY FIEBIG
CANDLEWICK RESIDENT & REALTOR
815-978-5233



LINDSAY MOORE
CANDLEWICK RESIDENT & REALTOR
815-980-9437



MAGGIE SWANSON
CANDLEWICK RESIDENT & REALTOR
815-980-0811

BERKSHIRE HATHAWAY | Crosby Starck Real Estate
HomeServices 551 N. Mulford, Rockford, IL 61107

*Percentage was calculated from data collected from Paragon RAAR MLS which is deemed reliable but is not guaranteed accurate. Avg sale price 2020 was \$154,552 and 2021 was \$185,336

Answers to Quiz on Page 8:

1. E- Framboise B- Midori A- Kahlua D-Triple Sec F- Frangelico C- Amaretto
2. C. That's about 3 tablespoons of liquor.
3. Dirty- B Dry-A Vesper-D Gibson-C
4. B- Blanco is the least aged variety commercially used for margaritas.
5. D- Timberlake has Sauza 901, Combs has DeLeon and Levine along with Sammy Hagar has a mezcal- tequila mix called Santo Mezquila.

We're in this together.



At Aqua Illinois, our customers are at the heart of everything we do. Our records indicate that your account has an outstanding balance, and if you are experiencing financial hardship, you can count on us for continued support.

Support is just three steps away:



Step 1: Call us at 877.987.2782.

Financial assistance and payment plans are available to support our customers. You may be eligible for a credit on your bill, so please call us to ensure uninterrupted service.



Step 2: Tell us about your needs.

We will explore options together – like identifying extended payment plans, or determining if you qualify for grants through our temporary COVID-19 Bill Payment Assistance Program, administered through Aqua Aid.



Step 3: Don't wait!

It's our goal to help as many customers as possible with expanded limited-time relief options. Call us today to take advantage of this support while it's available.

Deadline to Advertise in the Candlewick News February issue is January 15!

Call Bob at RBM Designs at 815-742-8333 or email rbsadvertising@gmail.com for information.

O'CONNELL'S LANDSCAPING

WINTER WARM UP

SNOWPLOWING & SNOW REMOVAL

- Driveways
- Parking lots
- Sidewalks

Small Engine Maintenance and Repair

- Snowblower
- Lawn mowers



CALL GLENN TODAY AT
815-509-9889



Let's move forward.

We're here for you during these challenging times. For more information about COVID-19 relief, call Aqua Customer Service or visit AquaAmerica.com and select "Illinois" from "Our States."